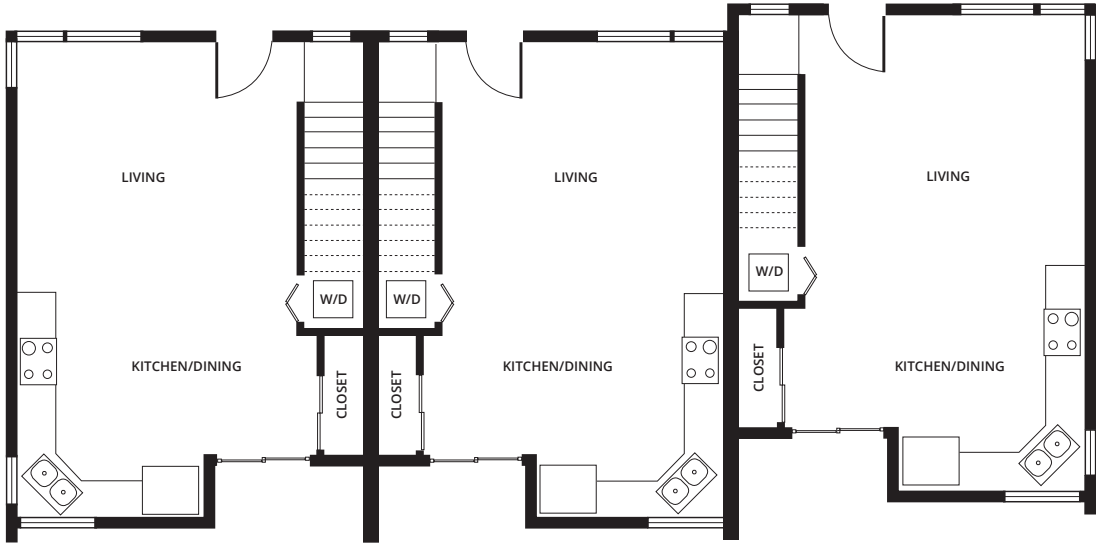


**TOWNHOME BUILDING B1 - LEVEL 1**

1330 Yakima Ave. S.  
3-BEDROOM  
\$298,250

1328 Yakima Ave. S.  
3-BEDROOM  
\$237,000

1326 Yakima Ave. S.  
3-BEDROOM  
\$237,000



**TOWNHOME BUILDING B1 - LEVEL 2**

1330 Yakima Ave. S.  
3-BEDROOM  
\$298,250

1328 Yakima Ave. S.  
3-BEDROOM  
\$237,000

1326 Yakima Ave. S.  
3-BEDROOM  
\$237,000

